



SINTRÁF:CO

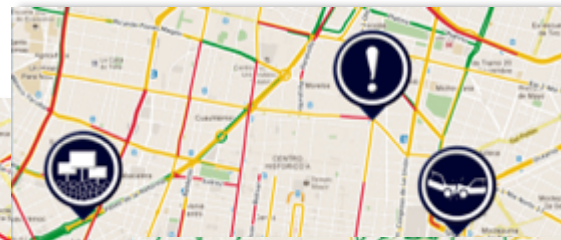
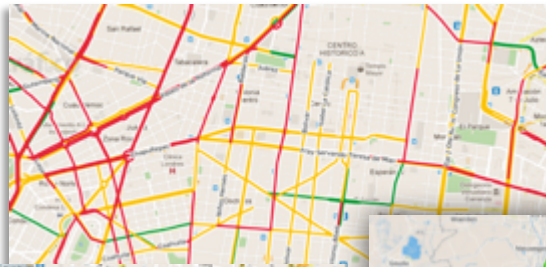
Towards smart mobility

The Company



SinTráfico is the first **Smart** Traffic and Mobility Solutions Platform in México with **Real-Time** and **High Quality** Information

Real-time and historical traffic



Traffic incidents

Travel times and routing



Comparative traffic



Weather and road conditions

High Quality Information



Traffic Data Gathering



Real-time collaboration with **Local Police** and **Red Cross**.

Satellite and **mobile tracking** of vehicles and devices.

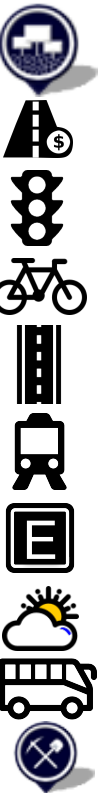
Millions of daily reports.

+ **400** incidents detected per day in call center.

Call Center with traffic **operators**

Information Delivered as Needed

- Accidents and Incidents
- Roadworks
- Protest Marches
- Road speeds
- Traffic congestion
- Travel times and routes
- Weather
- Public Transportation
- Parking Lots
- Parking meters
- Tolls
- Shared Cars
- Bycycles



Processing

Own algorithms

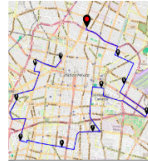
Who We Work With



Smart cities mobility
We help planning urban development through our information systems in real time and historical records



Real time fleet optimization
We help manage and optimize fleet routes and schedules, to help companies save money and increase their productivity



Mobility on tv and media
Presentation in media through dynamic and 3Dmaps in real-time



Automotive & Connected Car
We deliver real-time information to PNDs, in-dash navigation systems and infotainment systems



Geo-marketing y location analytics
We help companies decide the best location for a commercial store or an advertising space



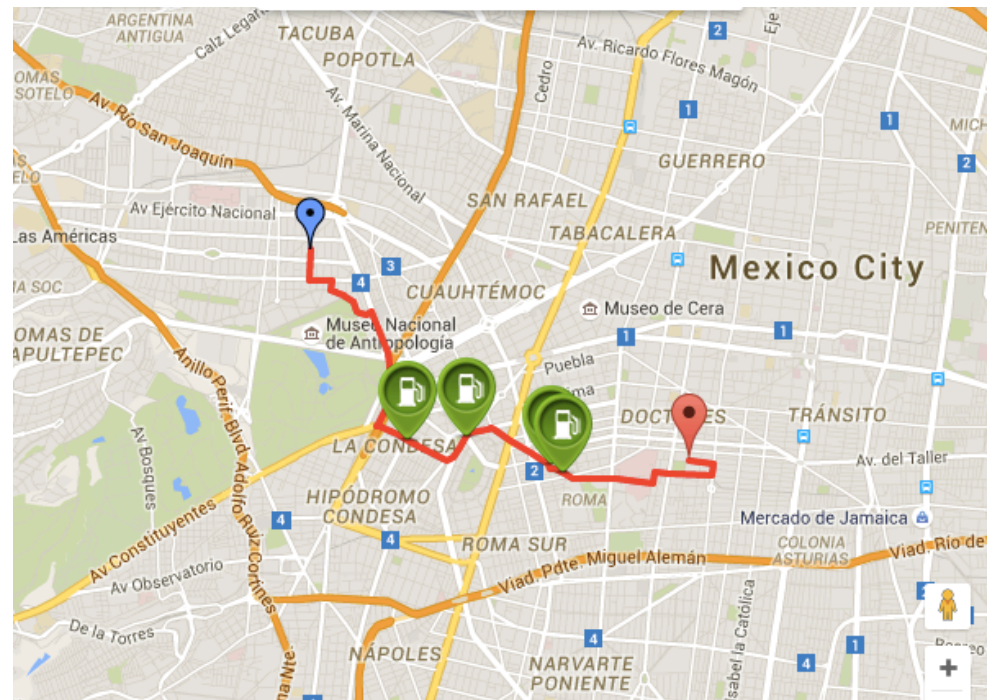


API SINTRÁFICO

Routing



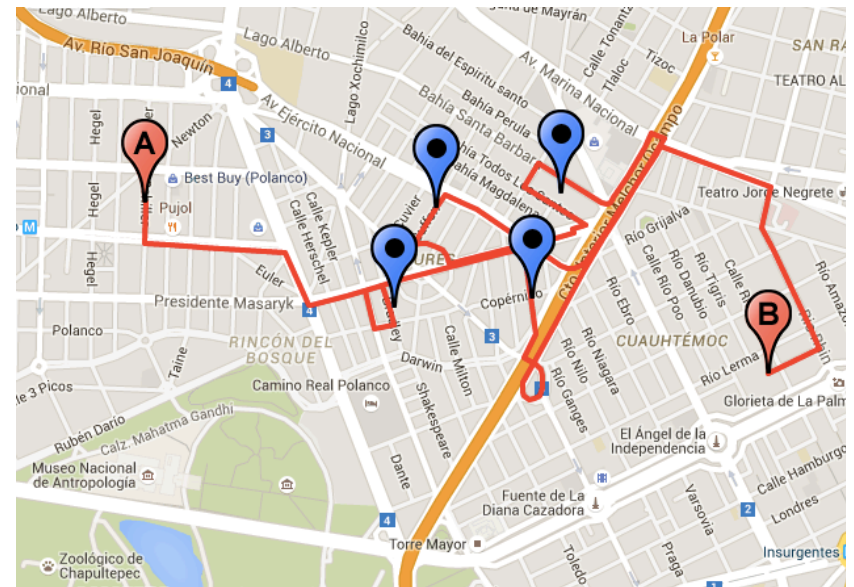
- api.sintrafico.com/route
- Start – End: Lat, Lon
- poi_set[], poi_in[]:
 - 0: Parkings
 - 1: Toll Booths
 - 2: Gas Stations
 - 3: Traffic Incidents
- parkings



Routing



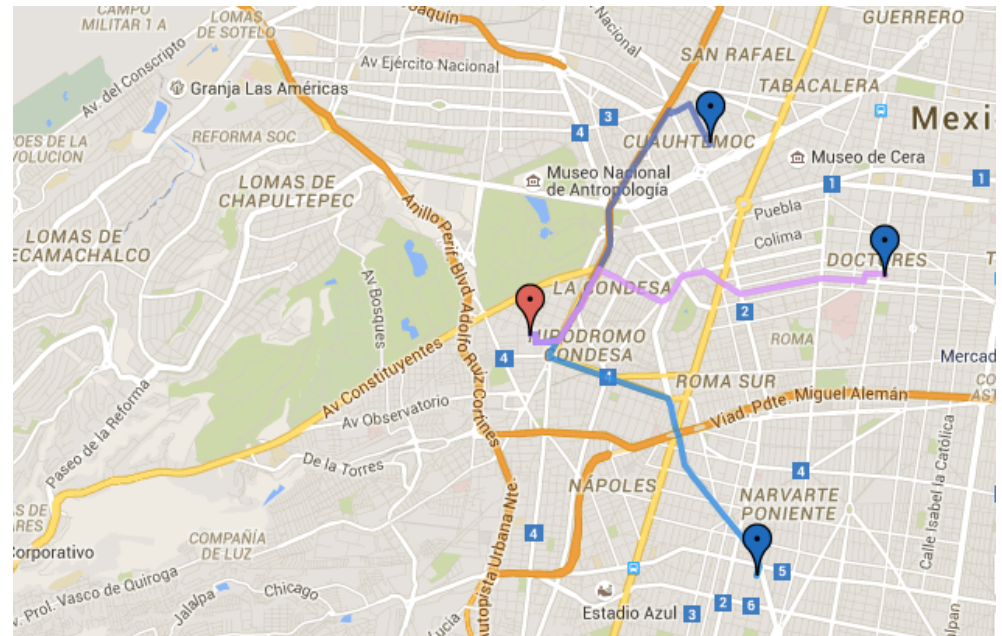
- Waypoints: wp[] Lat, Lon
- Optimize: Traveler Salesman Problem
- departure_time
- Transport: car, bicycle, pedestrian
- Weather
- geometry



Matrix



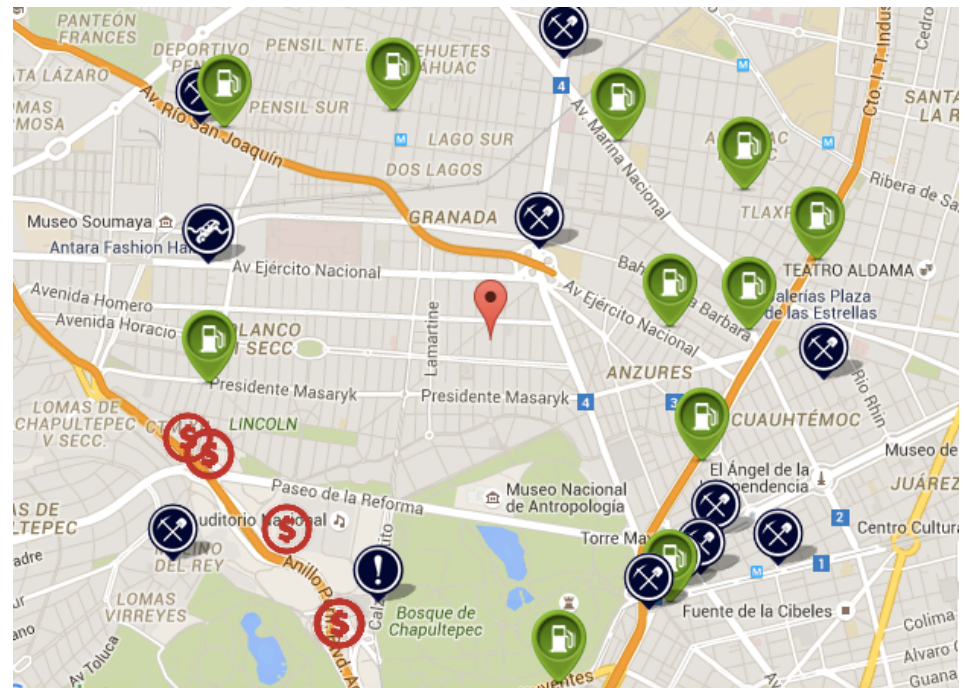
- api.sintrafico.com/matrix
- Start,End: Lat, Lon Arrays. `[[lat,lon]]`
- `departure_time`



Points of Interests



- api.sintrafico.com/st/pois
- poi_set:
 - 0: Parkings
 - 1: Toll Booths
 - 2: Gas Stations
 - 3: Traffic Incidents
- location / radius : Lat, Lon/km
- bounds: SW, NE
- q: query string



Use cases



Get a route to different places, and compare them against each other considering travel time or traffic incidents:

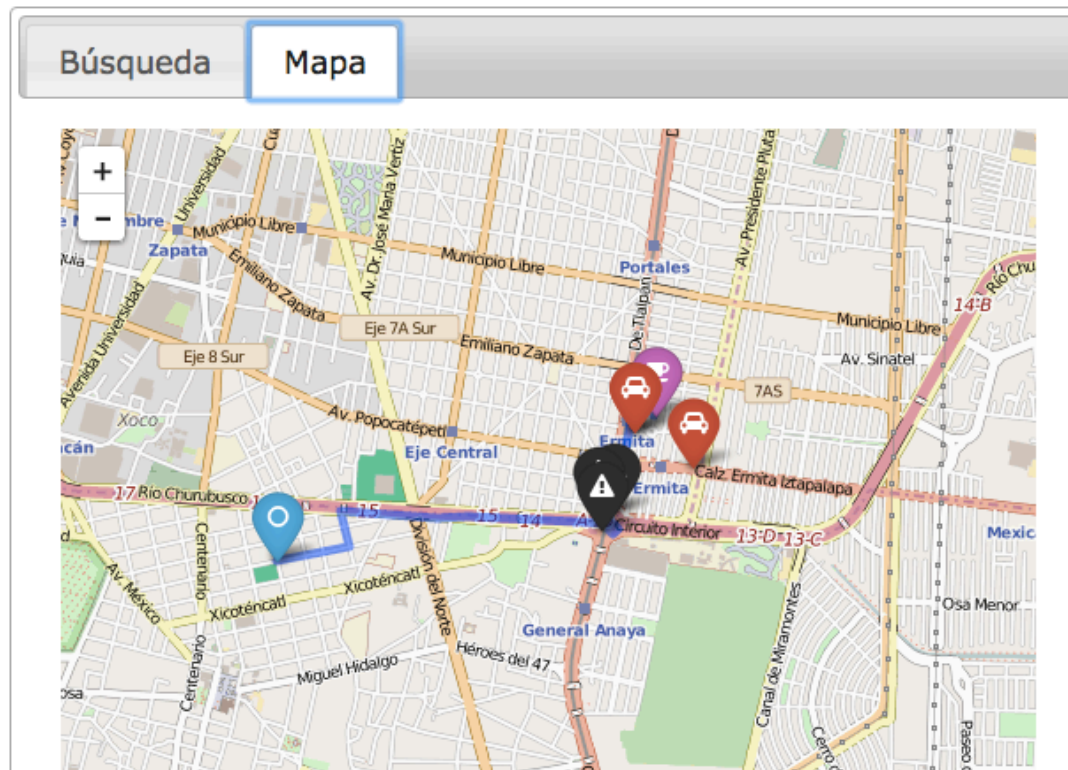
	Búsqueda	Mapa	
Cafetería 2	12 mins. Automóvil	39 mins. Caminando	16 mins. Bicicleta
Cafetería 3	15 mins. Automóvil	35 mins. Caminando	14 mins. Bicicleta
Cafetería 1	19 mins. Automóvil	35 mins. Caminando	14 mins. Bicicleta

Use cases

http://sintrafico.com/tutorial/caso_de_uso.html



Render the route in a map, showing parkings at the end of the route and traffic incidents along the route:





www.sintrafico.com
contacto@sintrafico.com

Towards smart mobility